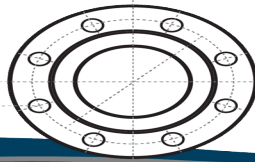


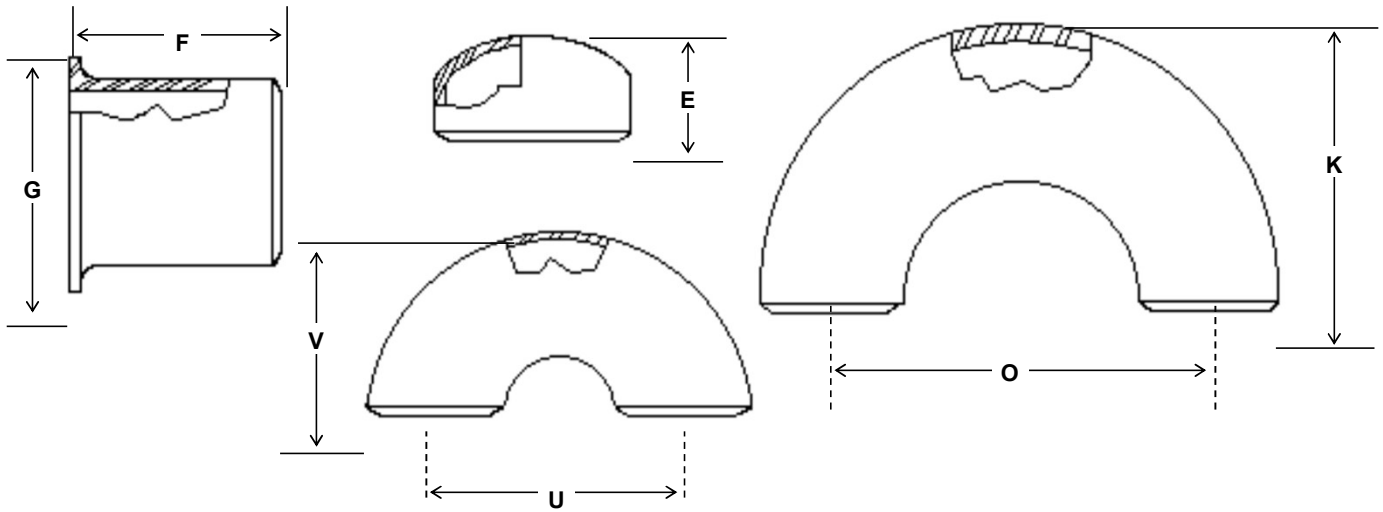
# PETROFLANGE



## STUB ENDS

## TAPON CAPA

## 180° RETORNOS



DIAMETRO NOMINAL	STUB ENDS			180° RETORNOS						
	LARGO F	DIAMETRO G	RADIO R	CAPA	RADIO LARGO		RADIO LARGO		DIAMETRO NOMINAL	
				ALTO E	CENTRO A CENTRO D	ALTURA K	CENTRO A CENTRO U	ALTURA V		
1/2	3.00	1.38	0.13	1.00	3.00	1.88	—	—	1/2	
3/4	3.00	1.69	0.13	1.50	2.25	1.68	—	—	3/4	
1	4.00	2.00	0.13	1.50	3.00	2.19	2.00	1.63	1	
1-1/4	4.00	2.50	0.19	1.50	3.75	2.75	2.50	2.06	1-1/4	
1-1/2	4.00	2.88	0.25	1.50	4.50	3.25	3.00	2.44	1-1/2	
2	6.00	3.63	0.31	1.50	6.00	4.19	4.00	3.19	2	
2-1/2	6.00	4.13	0.31	1.50	7.50	5.19	5.00	3.94	2-1/2	
3	6.00	5.00	0.38	2.00	9.00	6.25	6.00	4.75	3	
3-1/2	6.00	5.50	0.38	2.50	10.50	7.25	7.00	5.50	3-1/2	
4	6.00	6.19	0.44	2.50	12.00	8.25	8.00	6.25	4	
5	8.00	7.31	0.44	3.00	15.00	10.31	10.00	7.75	5	
6	8.00	8.50	0.50	3.50	18.00	12.31	12.00	9.31	6	
8	8.00	10.63	0.50	4.00	24.00	16.31	16.00	12.31	8	
10	10.00	12.75	0.50	5.00	30.00	20.38	20.00	15.38	10	
12	10.00	15.00	0.50	6.00	36.00	24.38	24.00	18.38	12	
14	12.00	16.25	0.50	6.50	42.00	28.00	28.00	21.00	14	
16	12.00	18.50	0.50	7.00	48.00	32.00	32.00	24.00	16	
18	12.00	21.00	0.50	8.00	54.00	36.00	36.00	27.00	18	
20	12.00	23.00	0.50	9.00	60.00	40.00	40.00	30.00	20	
22	12.00	25.25	0.50	10.00	66.00	44.00	44.00	33.00	22	
24	12.00	27.25	0.50	10.50	72.00	48.00	48.00	36.00	24	
26	—	—	—	10.50	78.00	52.00	—	—	26	
30	—	—	—	10.50	90.00	60.00	60.00	45.00	30	
36	—	—	—	10.50	—	—	72.00	54.00	36	

### SE FABRICAN DE CONFORMIDAD CON:

ASTM A-234 EN TODOS SUS GRADOS

WPB, WPC, WP1, WP12 CL1, WP12 CL2, WP11 C L1, WP11 CL2, WP11 CL3, WP22 CL1, WP22 CL3  
WP5 CL1, WP5 CL3, WP9 CL1, WP9 CL3, WPR, WP91

### CONTROLES DE CALIDAD

ANSI B16.9

ASME A/SA 234 WPB

ASME B16.9

ASME B16.28

MSS SP-75

ASTM A 234/A234M16

NACE MR 0175 ISO 15156